

# HAND SAWING

## CONCRETE WALL

DEPTH (mm)	RATE/lm	HIGH FREQUENCY/lm
25	\$10.50	\$14.17
30	\$10.50	\$14.17
50	\$15.20	\$20.52
75	\$21.10	\$28.48
100	\$30.15	\$40.70
125	\$37.90	\$51.16
150	\$46.50	\$62.77

## BRICK WALL

DEPTH (mm)	RATE/lm
25	\$5.00
50	\$7.15
75	\$12.90
100	\$17.00
125	\$21.40
150	\$26.20
Single Brick	\$24.00
Double Brick	\$55.00

## FLUSH CUT SAW

DEPTH (mm)	RATE/lm
25	\$10.99
30	\$10.99
50	\$17.36
75	\$24.36
100	\$32.76
125	\$39.55
150	\$47.46

Establishment & Transport	\$150
Min Charge	\$350
Sandstone Cutting	\$3 extra / Lm

# CONCRETE FLOOR

DEPTH (mm)	RATE/lm	HIGH FREQUENCY/lm
25	\$7.85	\$10.59
30	\$7.85	\$10.59
50	\$12.40	\$16.74
75	\$17.40	\$23.49
100	\$23.40	\$31.59
125	\$28.25	\$38.13
150	\$33.90	\$45.76

## RING SAW

DEPTH (mm)	RATE/lm	HIGH FREQUENCY/lm
100	\$60.00	\$81
150	\$65.00	\$87.75
175	\$75.00	\$101.25
200	\$85.00	\$114.75
225	\$95.00	\$128.25
250	\$110.00	\$148.50
275	\$125.00	\$168.75

## HYDRAULIC HAND WALL CUT

DEPTH (mm)	RATE/lm
100	\$50.00
150	\$65.00
200	\$80.00

### HUSQVARNA HIGH FREQUENCY RING SAW - K6500

✓ Cut indoors without fumes

✓ Low vibration levels mean less operator fatigue

✓ Can be used with either 3 Phase or 220volt

REQUIRES 3 PHASE POWER OR GENERATOR



Relocation	\$30 / per location
Generator	\$200 / per day
Wet Vac	\$100

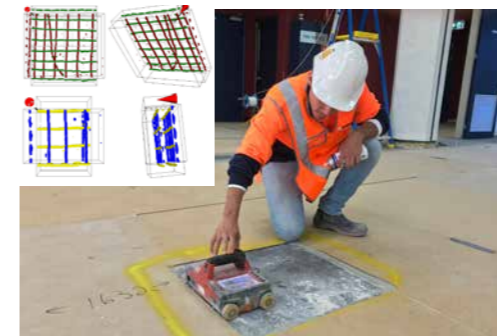
# CONCRETE GRINDING / SEALING



	TILE BEDDING / CARPET GLUE / PAINT / EPOXY	MEMBRANE / WATERPROOFING	SEALING	CLEAN UP SLAB / EXPOSE AGGREGATE
< 100m <sup>2</sup>	Hourly / \$20m <sup>2</sup> - \$30m <sup>2</sup>	Hourly / \$45m <sup>2</sup> - \$65m <sup>2</sup>	Hourly / \$20m <sup>2</sup> - \$30m <sup>2</sup>	Hourly / \$12m <sup>2</sup> - \$18m <sup>2</sup> per pass
100m <sup>2</sup> - 500m <sup>2</sup>	\$15m <sup>2</sup> - \$23m <sup>2</sup>	\$35m <sup>2</sup> - \$55m <sup>2</sup>	\$15m <sup>2</sup> - \$23m <sup>2</sup>	\$8m <sup>2</sup> - \$12m <sup>2</sup> per pass
500m <sup>2</sup> - 1000m <sup>2</sup>	\$10m <sup>2</sup> - \$20m <sup>2</sup>	\$25m <sup>2</sup> - \$33m <sup>2</sup>	\$10m <sup>2</sup> - \$20m <sup>2</sup>	\$6m <sup>2</sup> - \$10m <sup>2</sup> per pass
1000m <sup>2</sup> +	\$5m <sup>2</sup> - \$15m <sup>2</sup>	\$15m <sup>2</sup> - \$25m <sup>2</sup>	\$5m <sup>2</sup> - \$15m <sup>2</sup>	\$4m <sup>2</sup> - \$8m <sup>2</sup> per pass

Rates are priced on application. Please contact your account manager to organise a site visit and will supply a price accordingly. Travel & Establishment fee's may apply.

# CONCRETE SCANNING



## PERFECT CONCRETE CARE USE ONLY THE TOP OF THE RANGE EQUIPMENT FOR SCANNING CONCRETE STRUCTURES.

We provide detailed scanning of concrete structures assisting engineers, builders and developers. We can combine scanning of concrete service with concrete cutting and coring to save our clients time and money.

MALA Radio Detection

### CALL OUT FEE \$350 +GST

P/hr there after	\$225 +GST
A day charge - 8h	\$1200 +GST
Slab Scan Report	\$200 +GST



HILTI PS1000 X-Scanner



# WALL SAWING / WIRE SAWING

## WALL SAW RATE

DEPTH (mm)	RATE/lm
200	\$100 / Lm
250	\$125 / Lm
300	\$150 / Lm
350	\$175 / Lm
400	\$200 / Lm
450	\$225 / Lm
500	\$250 / Lm
500+	POA
Min. charge	\$2500



## WIRE SAW RATE

	RATE/m2
Min Charge	\$2,500 / m2
There after	\$1,000 / m2



# CONCRETE REPAIRS

## PERFECT CONCRETE CARE PROVIDE CONCRETE REMEDIAL SERVICES FOR COMMERCIAL, GOVERNMENT AND RESIDENTIAL PROJECTS.

Rates are priced on application. Please contact your account manager to organise a site visit

SERVICE	RATE
Labour	\$90 p/hr
Tavel & Establishment	\$150
Tools	\$150
Consumables	POA

# WORKING HOURS & TERMS

\*APPLICABLE TO ALL SERVICES

**Travel & Establishment:** Equipment prep, travel to site and setup. (Refer to pricing schedule for charges.)

**Working hours:** Standard Mon - Fri 7am - 3:30pm. Additional \$45 p/hr surcharge outside standard working hours and after 8 working hours. Saturday & Sundays \$90 p/hr surcharge all hours.

**Parking:** Client to provide parking, if not parking fee's and fines are payable by the client.

**Stand Down Charges:** \$90 p/hr Monday - Friday

\$120 p/hr Mon-Fri Night after 8hrs

\$160 p/hr Saturdays & Sundays

**CALL (02) 8021 1784**

**PO Box 3230, Marrickville NSW 2204**

[www.perfectconcretecare.com.au](http://www.perfectconcretecare.com.au)

[info@perfectconcretecare.com.au](mailto:info@perfectconcretecare.com.au)

# CORE DRILLING

DIAMETER (mm)	RATE/10MM DEPTH
25	\$1.45
40	\$1.45
50	\$1.60
65	\$1.70
75	\$1.85
82	\$1.95
90	\$2.00
100	\$2.20
115	\$2.75
125	\$2.75
150	\$3.15
175	\$3.80
200	\$4.75
225	\$5.50
250	\$6.25
275	\$6.95
300	\$7.70
350	\$9.65
375	\$10.40
400	\$12.25
450	\$15.25
500	\$18.25
600	\$20.70
700	\$28.00
800	\$32.00
Relocation	\$20 per hole
Horizontal Surcharge	\$15 per hole
Inverted Surcharge	Hourly
Excessive Steel (\$/10mm)	\$3.00 extra
Travel & Establish	\$150
Min Charge	\$350
Sandstone Coring	\$3.00 per 10mm
High Frequency Coring	+20%
Wet Vac	\$100
Concrete Care Assistant	\$75 per hour

**Relocation:** When the operator and tools are required to be moved from one location to another.  
**Horizontal Surcharge:** When the operator is required to core hole through horizontal substrates, i.e. block, brick and concrete walls/panels.  
**Inverted Surcharge:** When the operator is required to core over head through a slab / soffit.  
**Excessive Steel:** When the operator identifies more than 10mm of steel per 100mm cored.  
**Wet Vac / Slurry Control:** When the operator is required to supply an attachment to collect additional water / slurry created by the core drilling.



# ROAD SAWING

DEPTH (mm)	RATE/1m
25	\$2.05
30	\$2.30
40	\$2.70
50	\$2.75
60	\$4.50
75	\$5.00
100	\$5.55
110	\$6.90
125	\$7.00
130	\$7.50
140	\$8.15
150	\$8.25
175	\$9.85
200	\$11.55
225	\$13.10
250	\$16.15
275	\$19.00
300	\$23.20
325	\$28.00
350	\$36.00
385	\$38.00
400	\$48.35
450	\$60.00
Kerb Cut	\$12.00
Kerb & Gutter Cut	\$16.00
Road Saw Travel & Establishment	\$250
Suspended Slab surcharge	45%
Pushsaw Surcharge	40%
High Frequency Cutting	+20%
Min Charge	\$600
Water Cart	\$220 per day
Concrete Care Assistant	\$75 per hour

**Push Saw Surcharge:** When the operator is required to work in small/difficult areas which the large road saw will not fit

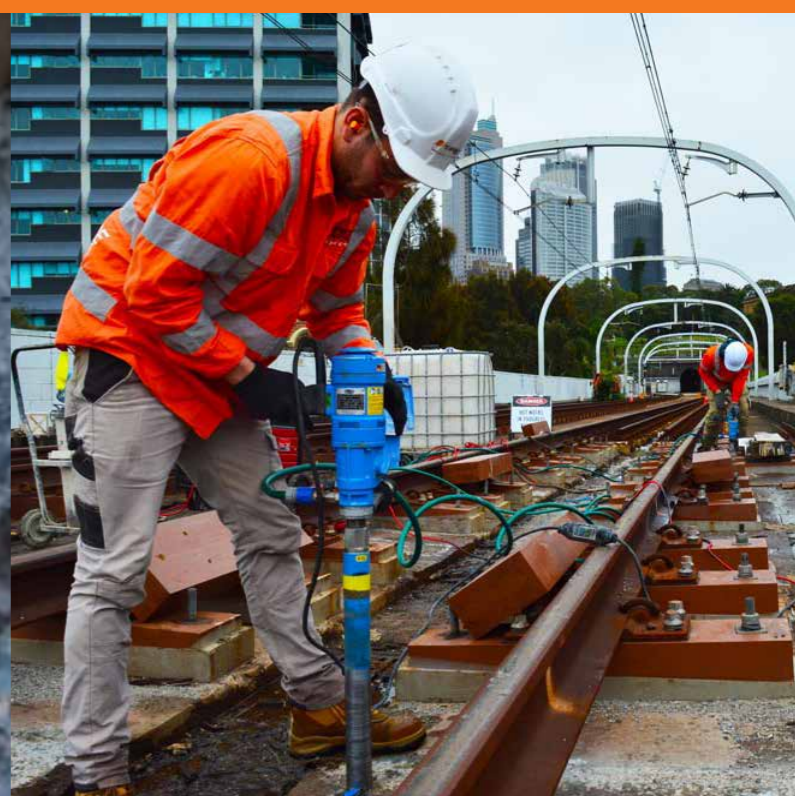


All prices are excluding GST and are subject to change without notice.



# PERFECT CONCRETE CARE

CUTTING • CORING • GRINDING • SCANNING



# PRICELIST