

HAND SAWING

CONCRETE WALL

DEPTH (mm)	NORMAL SAW RATE/lm	HIGH FREQ RATE/lm
25	\$10.50	\$14.17
30	\$10.50	\$14.17
50	\$15.20	\$20.52
75	\$21.10	\$28.48
100	\$30.15	\$40.70
125	\$37.90	\$51.16
150	\$46.50	\$62.77

BRICK WALL

DEPTH (mm)	NORMAL SAW RATE/lm	HIGH FREQ RATE/lm
25	\$5.00	\$6.75
50	\$7.15	\$9.65
75	\$12.90	\$17.41
100	\$17.00	\$22.95
125	\$21.40	\$28.89
150	\$26.20	\$35.37
Single Brick	\$24.00	\$32.20
Double Brick	\$55.00	\$74.25

Hand Saw Establishment & Transport	\$150
Min Charge	\$350
Sandstone Cutting (Per/Lm)	\$3.00 extra
Wet Vac / Slurry Bin	\$100 / per Bin

CONCRETE FLOOR

DEPTH (mm)	NORMAL SAW RATE/lm	HIGH FREQ RATE/lm
25	\$7.85	\$10.59
30	\$7.85	\$10.59
50	\$12.40	\$16.74
75	\$17.40	\$23.49
100	\$23.40	\$31.59
125	\$28.25	\$38.13
150	\$33.90	\$45.76

RING SAW

DEPTH (mm)	NORMAL SAW RATE/lm	HIGH FREQ RATE/lm
100	\$60.00	\$81.00
150	\$65.00	\$87.75
175	\$75.00	\$101.25
200	\$85.00	\$114.75
225	\$95.00	\$128.25
250	\$110.00	\$148.50
275	\$125.00	\$168.75

HYDRAULIC HAND WALL CUT

DEPTH (mm)	RATE/lm
100	\$50.00
150	\$65.00
200	\$80.00

HUSQVARNA HIGH FREQUENCY RING SAW - K6500

✓ Cut indoors without fumes

✓ Low vibration levels mean less operator fatigue

✓ Can be used with either 3 Phase or 220volt



+35% for High Frequency Cutting

CONCRETE GRINDING/POLISHING



	TILE GLUE / BEDDING	CARPET GLUE / PAINT / EPOXY	WATER PROOFING	CLEAN UP SLAB / EXPOSE AGGREGATE
< 100m ²	Hourly / \$20m ² - \$30m ²	Hourly / \$25m ² - \$35m ²	Hourly / \$50m ² - \$70m ²	Hourly / \$12m ² - \$18m ² per pass
100m ² - 500m ²	\$15m ² - \$25m ²	\$20m ² - \$30m ²	\$40m ² - \$60m ²	\$8m ² - \$12m ² per pass
500m ² - 1000m ²	\$10m ² - \$20m ²	\$15m ² - \$25m ²	\$30m ² - \$40m ²	\$6m ² - \$10m ² per pass
1000m ² +	\$5m ² - \$15m ²	\$10m ² - \$20m ²	\$20m ² - \$30m ²	\$4m ² - \$8m ² per pass

Rates are priced on application. Please contact your account manager to organise a site visit and will supply a price accordingly. Travel & Establishment fee's may apply.

CONCRETE SCANNING

PERFECT CONCRETE CARE USE ONLY THE TOP OF THE RANGE EQUIPMENT FOR SCANNING CONCRETE STRUCTURES.

We provide detailed scanning of concrete structures assisting engineers, builders and developers. We can combine scanning of concrete service with concrete cutting and coring to save our clients time and money.

Detailed Reports can be prepared if requested, using our best knowledge of equipment and building methods.

3D specialised scans can be arranged if requested.

Please contact your account manager to discuss your project needs and requirements.



CALL OUT FEE \$500 + GST

INCLUDES:

1 hour on site and travel.

\$225 + GST p/hr thereafter.

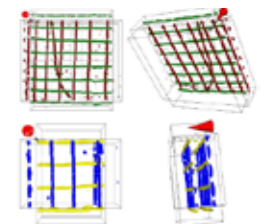
Full slab scan report \$200 + GST

Single page slab scan report \$100 + GST

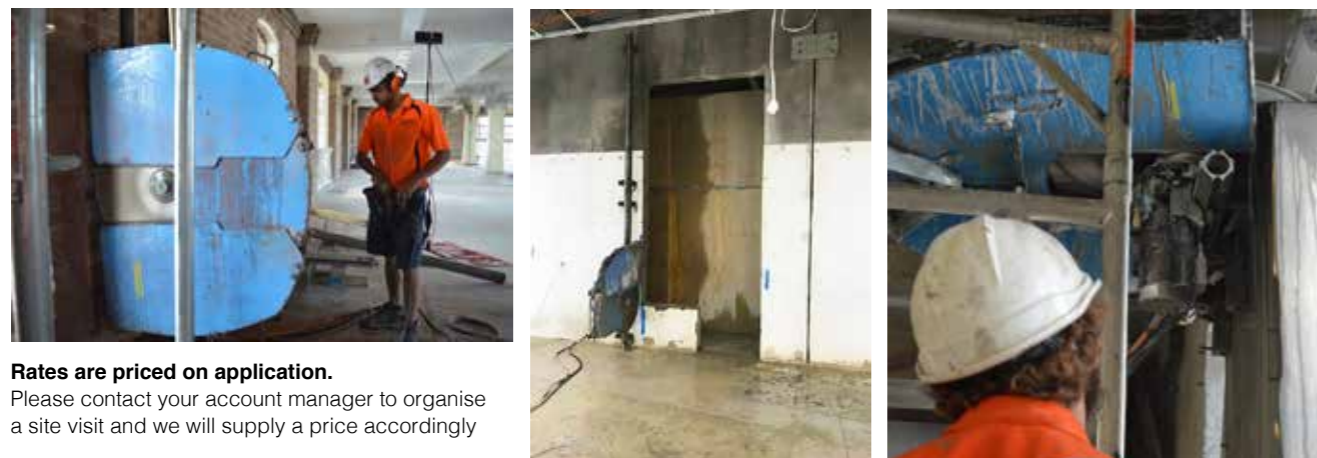
MALA Radio Detection RD7000



HILTI PS1000 X-Scanner



WALL SAWING



Rates are priced on application.

Please contact your account manager to organise a site visit and we will supply a price accordingly

WORKING HOURS & TERMS

*APPLICABLE TO ALL SERVICES

Travel & Establishment: Equipment prep, travel to site and setup. (Refer to pricing schedule for charges.)

Working hours: Standard Mon - Fri 7am - 3:30pm. Additional \$40 p/hr surcharge outside standard working hours and after 8 working hours. Saturday & Sundays \$80 p/hr surcharge all hours.

Parking: Client to provide parking, if not parking fee's and fines are payable by the client.

Stand Down Charges: \$80 p/hr Monday - Friday

\$120 p/hr Mon-Fri Night after 8hrs

\$160 p/hr Saturdays & Sundays

CALL 02 8021 1784

PO Box 3230, Marrickville NSW 2204

www.perfectconcretecare.com.au

info@perfectconcretecare.com.au

CORE DRILLING

DIAMETER (mm)	RATE/10MM DEPTH
25	\$1.45
40	\$1.45
50	\$1.60
65	\$1.70
75 / 76	\$1.85
82	\$1.95
90	\$2.00
100 / 102	\$2.20
115	\$2.75
125	\$2.75
150	\$3.15
175	\$3.80
186 / 200 / 202	\$4.75
225	\$5.50
250	\$6.25
275	\$6.95
300	\$7.70
350	\$9.65
375	\$10.40
400	\$12.25
450	\$15.25
500	\$18.25
600	\$20.70
700	\$28.00
800	\$32.00
Relocation	\$30 per hole
Horizontal Surcharge	\$15 per hole
Inverted Surcharge	Hourly
Excessive Steel (\$/10mm)	\$3.00 extra
Travel & Establish	\$150
Min Charge	\$350
Sandstone Coring	\$3.00 per / 10mm
High Frequency Coring	+35%
Wet Vac / Slurry Bin	\$100 / per Bin

Relocation: When the operator and tools are required to be moved from one location to another.
Horizontal Surcharge: When the operator is required to core hole through horizontal substrates, i.e. block, brick and concrete walls/panels.
Inverted Surcharge: When the operator is required to core over head through a slab / soffit.
Excessive Steel: When the operator identifies more than 10mm of steel per 100mm cored.
Wet Vac / Slurry Control: When the operator is required to supply an attachment to collect additional water / slurry created by the core drilling.



ROAD SAWING

DEPTH (mm)	RATE/1m
25	\$2.05
30	\$2.30
40	\$2.70
50	\$2.75
60	\$4.50
75	\$5.00
100	\$5.55
110	\$6.90
125	\$7.00
130	\$7.50
140	\$8.15
150	\$8.25
175	\$9.85
200	\$11.55
225	\$13.10
250	\$16.15
275	\$19.00
300	\$23.20
325	\$28.00
350	\$36.00
385	\$38.00
400	\$48.35
450	\$60.00
500	\$110.00
Slurry Removal	POA
Kerb Cut	\$12.00
Kerb & Gutter Cut	\$16.00
Road Saw Travel & Establishment	\$250
Suspended Slab surcharge	45%
Pushsaw Surcharge	40%
Min Charge	\$350 + travel & establishment

Push Saw Surcharge: When the operator is required to work in small/difficult areas which the large road saw will not fit



All prices are excluding GST and are subject to change without notice.



PERFECT CONCRETE CARE

CUTTING • CORING • GRINDING • SCANNING



PRICELIST