



 **PERFECT**
CONCRETE CARE

GRINDING & POLISHING

BROCHURE

CUTTING . CORING . GRINDING . SCANNING . PATCHING

ABOUT US

At Perfect Concrete Care, we are passionate about polished concrete. See, to us, polishing concrete is not a job, it's an art. Anybody can just pick up a grinder and start grinding concrete but It takes years of experience to master the endless amount of diamond tooling and grinders. The real art is knowing which combination of tooling and passes are needed to achieve the best possible finish on any type of concrete.

That's why when you are looking to get high-end polishing done in Sydney, you need to make sure you engage a professional contractor like Perfect Concrete Care, as mistakes in this industry can not only be very time-consuming to fix but also extremely expensive as the labour and hours needed to carry out each pass adds up.





WE ARE PASSIONATE ABOUT CRAFTING STUNNING POLISHED CONCRETE FINISHES

CONTENTS

Grind & Seal Page 06-07

Partial Exposure Page 08-09

Full Exposure Page 10-11

Cream Finish Page 12-13

Case Studies Page 14-27

Our Clients Page 28-29

Our Equipment Page 30-31



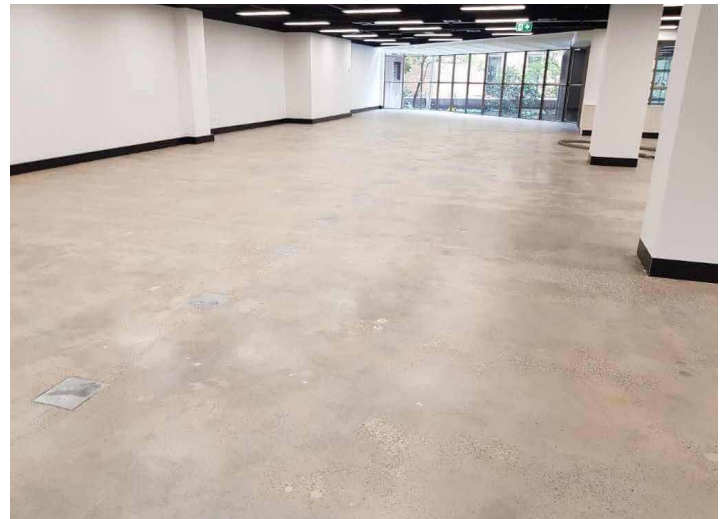


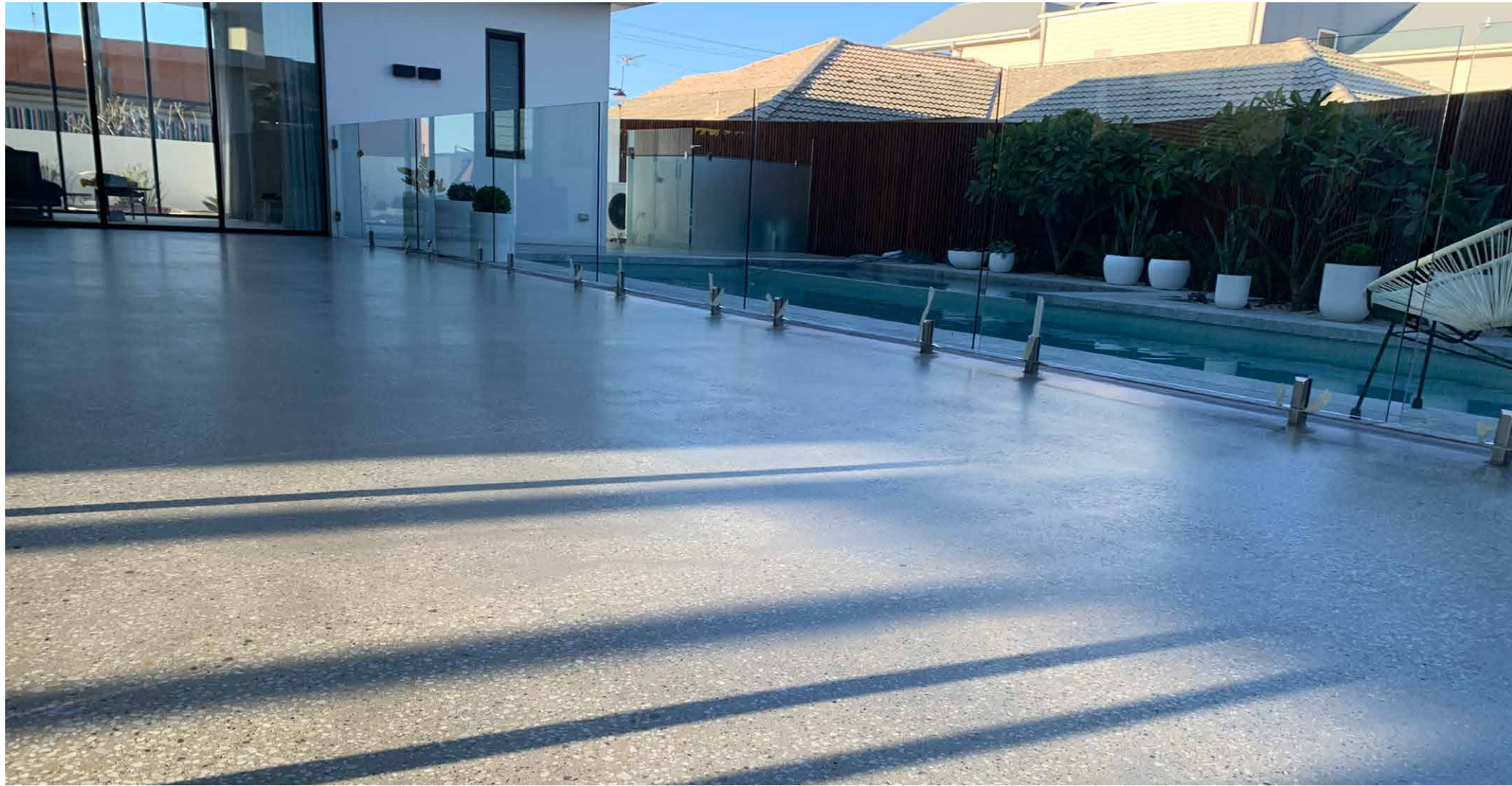
GRIND & SEAL

There are multiple types of finishes in the industry such as, Grind & Seal, Partial Exposure, Full Exposure, Cream finish, and so on. One of the most common finishes our clients look for is the Grind & Seal. The Grind & Seal finish gives a smooth satin matte finish to the floor and is perfect for those clients that are looking for a rustic industrial finish which is currently very popular in cafes and restaurants. A major advantage of this system is its affordability.

Grind & Seal is a concrete industry term for a clear coating system applied to a concrete surface. This finish, sometimes referred to as polished concrete, is just a coated concrete surface. Premier home concrete polishing would involve grinding

the concrete to remove imperfections and other coatings and then sealing it to protect the surface from wear and tear. This cost-effective system has many coating options, allowing floors to be completely customizable.







PARTIAL EXPOSURE

This refers to only grinding a small amount of the concrete surface to ensure the concrete is flat, groutable and will achieve a consistent gloss level if polished.

This, like zero exposure, is a very hard exposure level to successfully achieve a consistent result, as aggregate distribution can vary from area to area depending on the mix and installation.

For this exposure level, we generally remove 1 - 1.5 mm from the concrete - basically just enough to ensure the entire floor is completely flat and suitable for polishing.

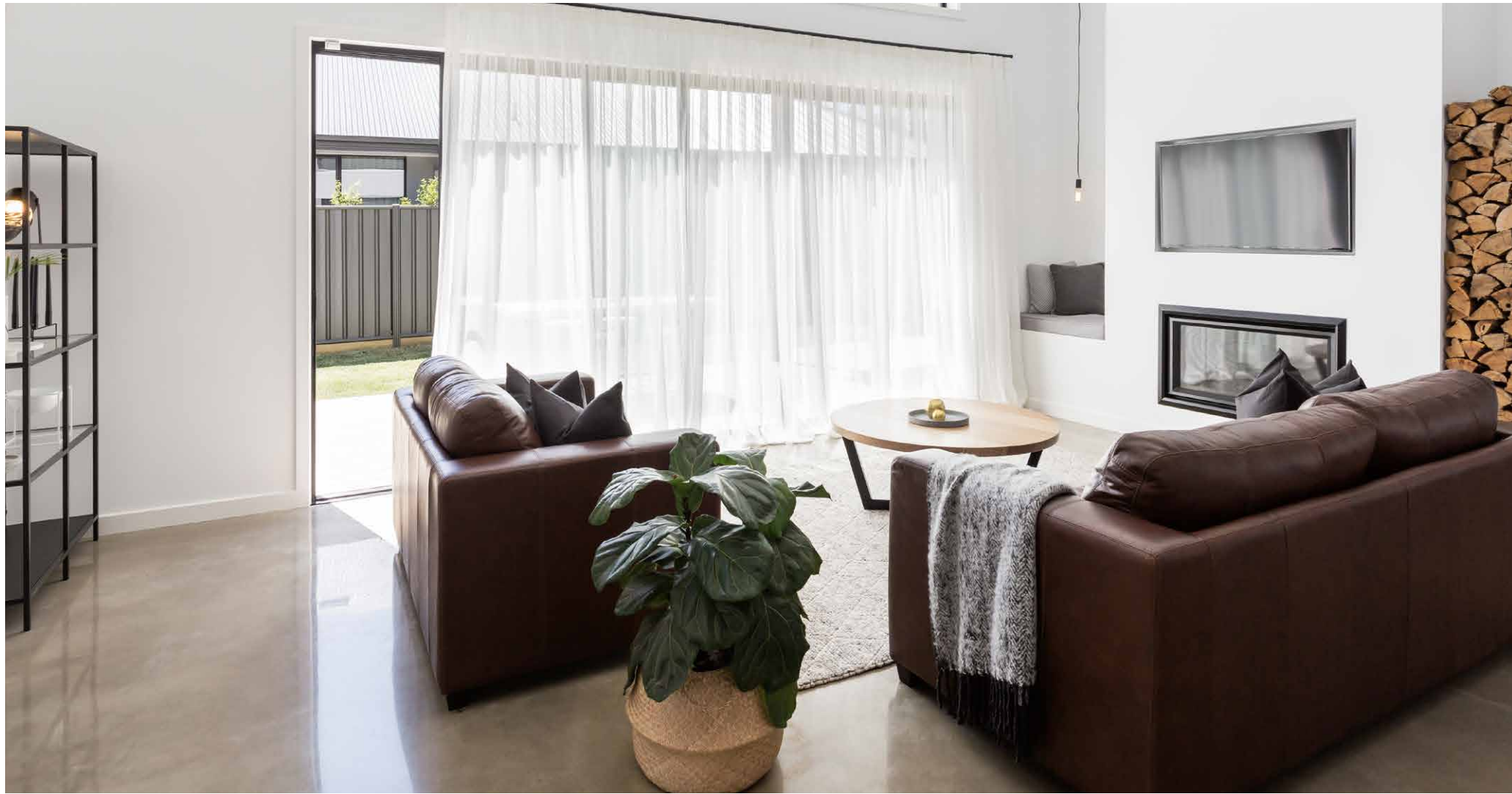




FULL EXPOSURE

This is grinding enough of the concrete away to achieve the maximum exposure of stones possible. From our experience we have found that removing approximately 5mm of the concrete allows the best chance of achieving consistency in exposure – catering for different sizes of aggregate and minor surface height variations to be dealt with.

Especially in the polished concrete system, the stones or aggregate are more easily polished and able to retain high gloss, therefore the more stone visible the more spectacular the results can be. Now, it is not always achievable to get consistent full exposure in old concrete slabs as usually a full exposure finish is planned before the slab is even poured. This means formworkers make sure to order the correct aggregate mix and when it is being formed that the aggregate is evenly distributed.





CREAM FINISH POLISHED CONCRETE

A cream finish on concrete surfaces gives a smooth, cloudy, shiny, and reflective look. Cream finish generally does not expose the aggregate and is done by carefully burnishing the concrete surface repeatedly.

You can choose the type and level of gloss and creaminess you want to achieve. Additionally, you can have a polished concrete with a matte to a glassy mirror-like surface. Its reflectivity maximizes the natural light in the space. It is a classic and versatile finish and therefore, is ideal for commercial, residential as well as industrial spaces.

Canva

SURRY HILLS OFFICE GRIND & SEAL

Perfect Concrete Care worked on the Canva office flooring in Surry Hills. This project involved grinding and sealing over 3570m² of a multi-story building. Firstly our team members carried out 1,230m² of Vinyl Glue Removal with our two large floor grinders. Once all vinyl glue was removed the next task was the patch all imperfections in the floor such as cracks and divots. The client was seeking an industrial finish on this project. So after patching we carried out more passes with higher grit diamond.

After grinding the floors and slabs, our team members thoroughly cleaned the area with our Tyrolit 4500D Dust Extractors before applying coats of sealer to seal the surfaces. The finished product was a partial exposure grind and seal that gives the space an industrial look.









UNITA.

FUJI XEROX ROSEHILL GRIND & SEAL

Perfect Concrete Care worked on Unita's Fuji Xerox Make Good project in Rosehill. The several challenges of the project included tactile linemarking, incidental slab damage, rectification of temporary works such as dynabolted barriers & stands and other fittings & fasteners. Our team removed the tactile linemarking mechanically using hand grinders. They rectified the remnants of 500+ dynabolts by core-drilling every individual hole and then patching them up with Sika's epoxy resin so the surface can be dynabolted again in the future if needed. Meanwhile, hundreds of metres of walkways were stripped back to slab level with the remote grinder. Finally, the slab was sealed using Viroseal to prevent the ingress of impurities.

RESIDENCE IN NEWTOWN GRIND & SEAL

Perfect Concrete Care was engaged by a private client for a beautiful grind and seal project at Wilson St, Newtown.

The aim of this project was to rejuvenate a worn concrete slab by grinding and sealing to give it the bronze industrial finish that the client was looking for.

Usually, for this type of project, we would use our HTC Duratiq remote grinders but that access to this project was very tricky as there was only a single set of stairs up to this loft floor. So we used our smaller Floorex Meteor and Satellite grinders as they are more mobile and lightweight.

As the client was looking for a grind and seal with a bronze finish we began by carrying out two passes with medium grit diamonds to smooth out the slab but not expose any of the aggregates. Once the slab had been ground down and levelled, it was time to seal. We applied one coat of our C2 ultra seal which provided a bronze finish. The final outcome was a beautiful bronze grind and seal finish that give the space an industrial look that is all the craze right now.

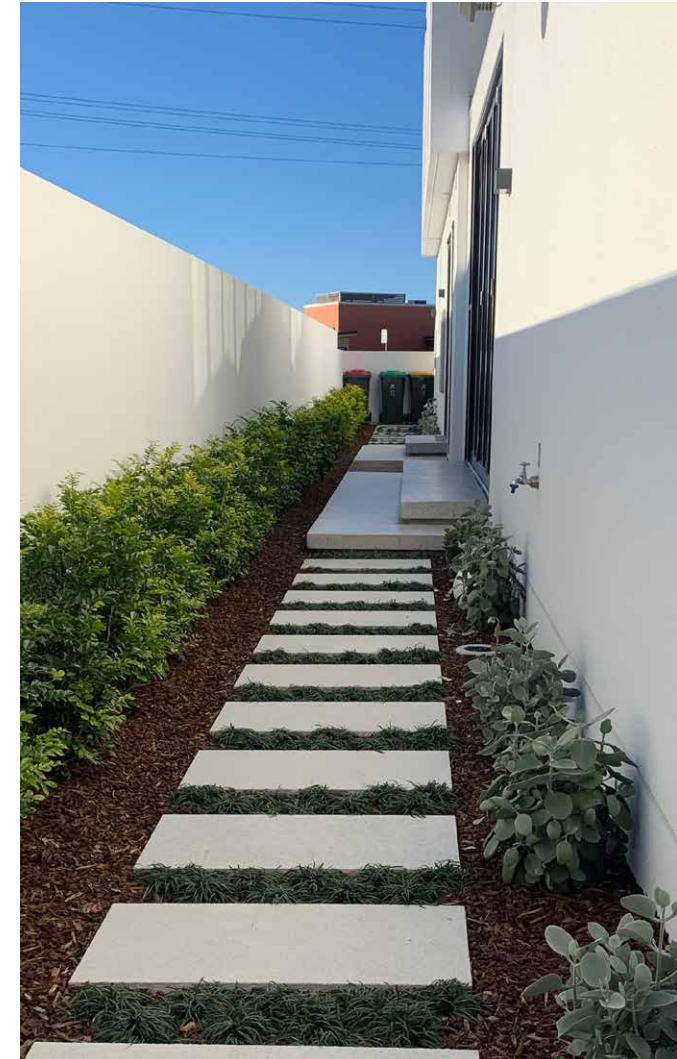




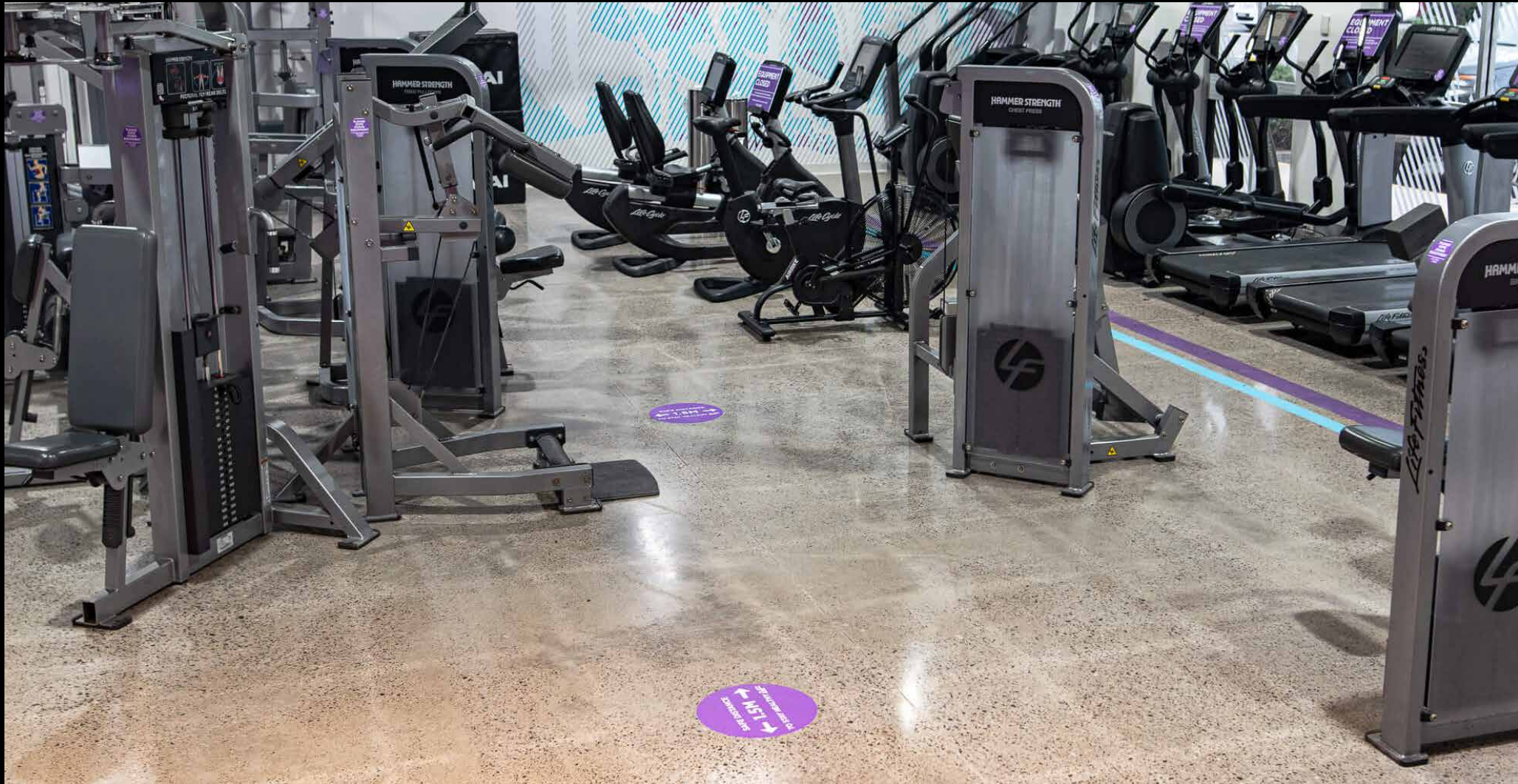
HUTCHINSON BUILDERS

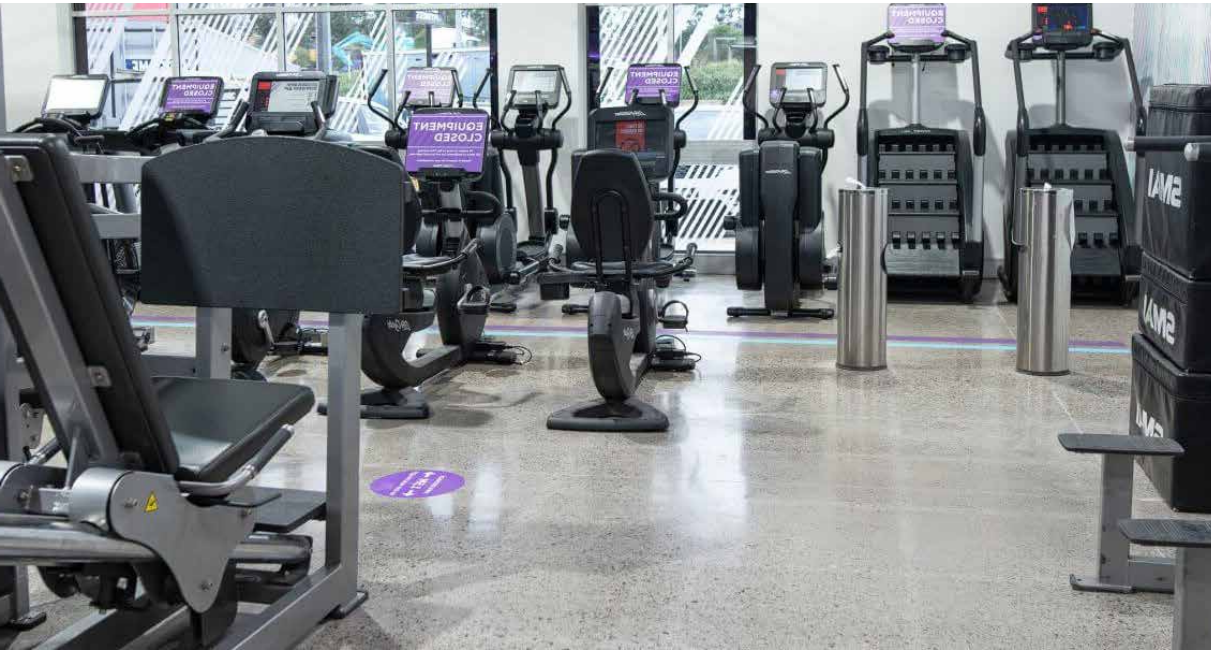
RESIDENCE IN TOWRADGI PARTIAL EXPOSURE

In 2020, Perfect Concrete Care was contracted by the Hutchinson Builders for a particularly challenging project in Towradgi. A solid four months of work needed to be completed only in eleven weeks. PCC allocated four operators and two vans full-time. They chased, patched, ground and sealed their way to high vis victory. Some of the more difficult challenges included regrinding and repolishing the entire floor, hand grinding hundreds of steps, and detail patching, which were all completed flawlessly by our team.









EDMONDSON PARK GYM FULL EXPOSURE POLISH

Anytime Fitness contracted Perfect Concrete Care to complete a grind and polish rectification of slab for refurbishment of their branch in Edmondson Park. Firstly, we removed all the existing glue off the slab to prepare for the aggregate exposure. Using our Tyrolit Duratq set up with dust extraction unit, with various levels of diamond shoes we proceeded with various passes over the slab to expose the aggregate within the slab. After exposing the aggregate, densifier was applied to the slab to harden the concrete. Followed by various passes with resin pads to achieve a 200 grit concrete polish finish. Finally, the slab was sealed with a concrete sealer and burnished with heat pads. The final product is not only aesthetically pleasing but durable, easily maintained and will last decades.

Built.

SYDNEY HEAD OFFICE FULL EXPOSURE POLISH

When they were building and designing their head office in Sydney, Built was looking for a beautiful full-exposure polished concrete floor so they came straight to Perfect Concrete Care knowing they were dealing with industry leaders.

Our experienced crew suggested over fourteen passes to achieve the best possible full-exposure finish. In a tight window between trades, the Perfect Concrete crew worked tirelessly to get this project across the line. The final product was a beautiful high-sheen full exposure finish that Built were over the moon about.





OUR CLIENTS

Throughout the years Perfect Concrete Care has worked with some of the biggest builders and contractors in Australia as well as some brilliant local builders.

Perfect Concrete Care has the financial and operational capacity to take on any size project. From simple garage or driveway grind and seal to entire warehouses or car parks.

Our OH&S standards are second to none, we ensure all our Operators are lung and mask-fit tested annually to ensure optimal protection against silica dust.

**JOHN
HOLLAND**

M sydney
METRO

 **acciona**

 **Fulton Hogan**

C
J.
D
U
N
C
A
N

GARTNERROSE


SEKISUI HOUSE

**HUTCHINSON
BUILDERS**
Established 1912

 **Systems
Connect**

Built.

TAYLOR

DEGNAN

ARENCO 

FDC

LAING O'ROURKE



OUR TEAM

Our team of expert operators is what makes Perfect Concrete Care. Their knowledge and expertise is the key to our success. They have overcome unsurmountable challenges and come out the other side with a smile on their face. We ensure all our Operators have the best equipment on the market as well as have strict OH&S standards to meet the modern construction environment.



PERFECT CONCRETE CARE

Get In touch

(02) 8021 1784
1300 737 332

For more info, please visit our website :
www.perfectconcretecare.com.au

CUTTING . CORING . GRINDING . SCANNING . PATCHING